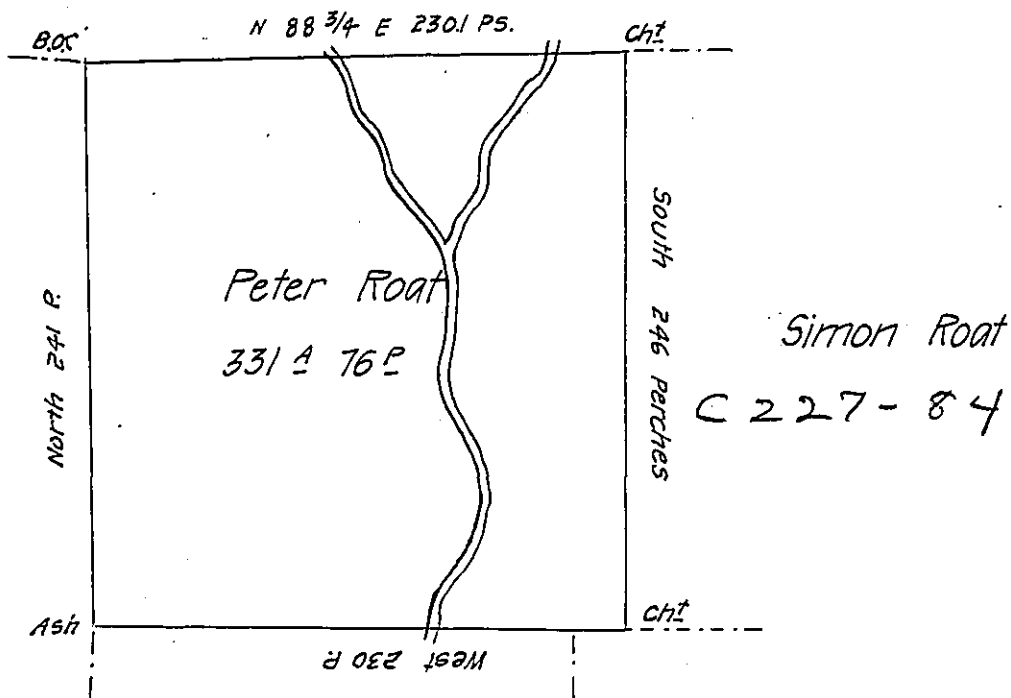


District Line



Henry Roat

John Roat

Situate on the east side of French Creek in Alegheny County  
 Containing 331<sup>as</sup> 76 perches & allowance of six per cent for roads  
 & surveyed the 29<sup>th</sup> day of May 1795 in pursuance of a warrant  
 dated the 10<sup>th</sup> day of April 1793.

W<sup>m</sup> Power D<sup>y</sup> S<sup>r</sup>.

To Daniel Brodhead Esq<sup>r</sup>  
 Surveyor General.

IN TESTIMONY that the above is a copy of the original remaining on file in  
 the Department of Internal Affairs of Pennsylvania, made  
 conformably to an Act of Assembly approved the 16th day of  
 February, 1833, I have hereunto set my Hand and caused  
 the Seal of said Department to be affixed at Harrisburg,  
 this seventh day of March 1907.

*Leadin Brown*  
 Secretary of Internal Affairs.